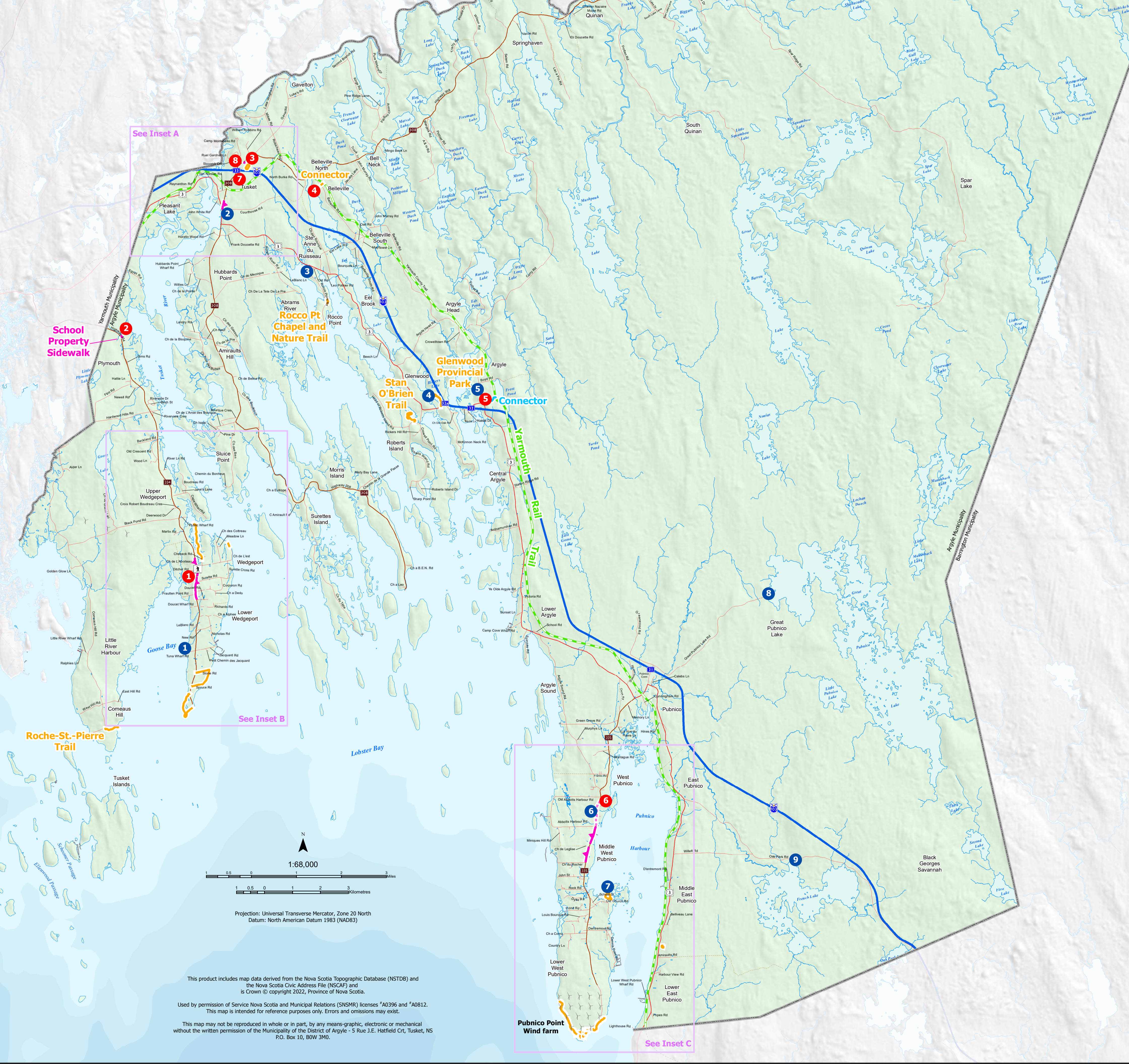
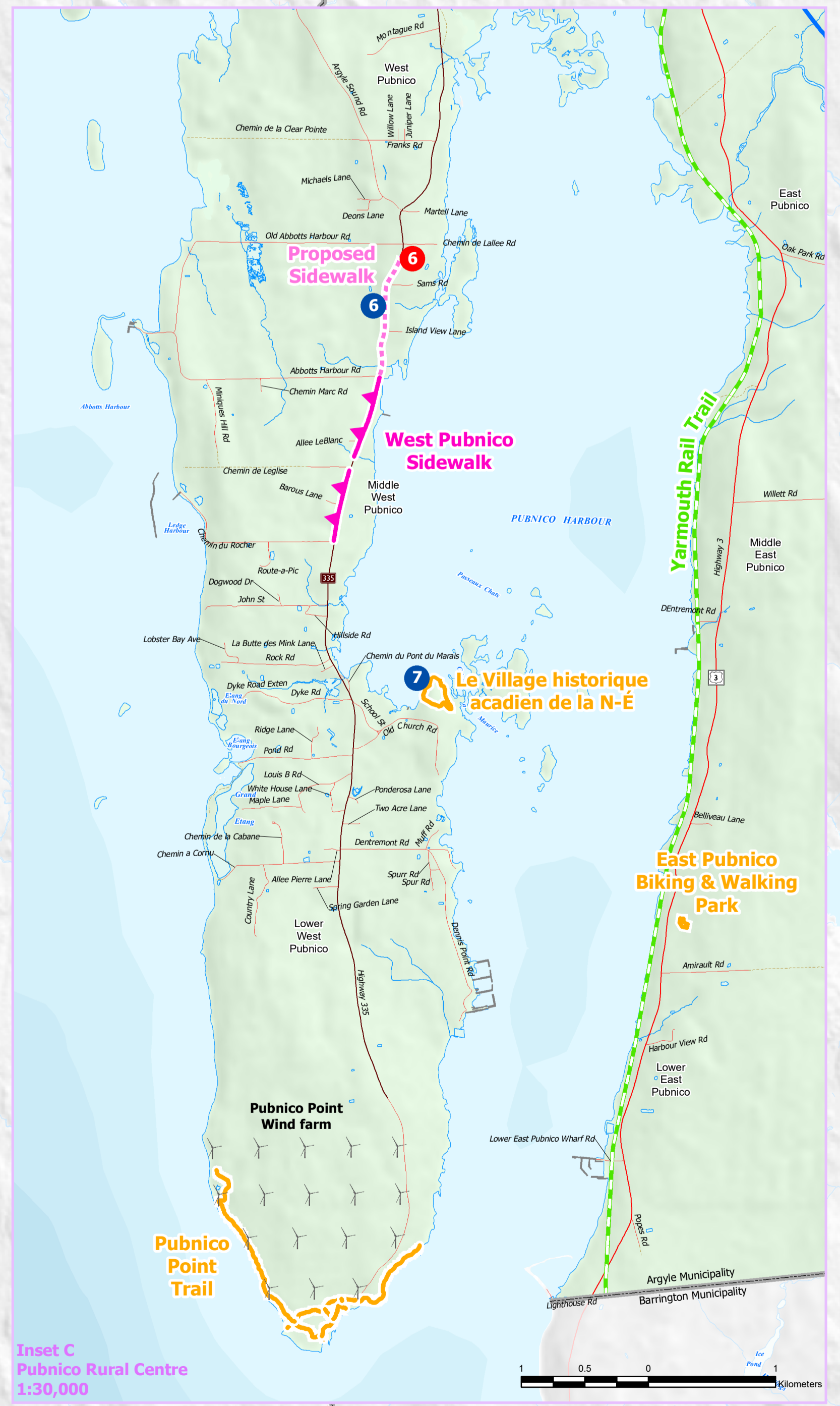
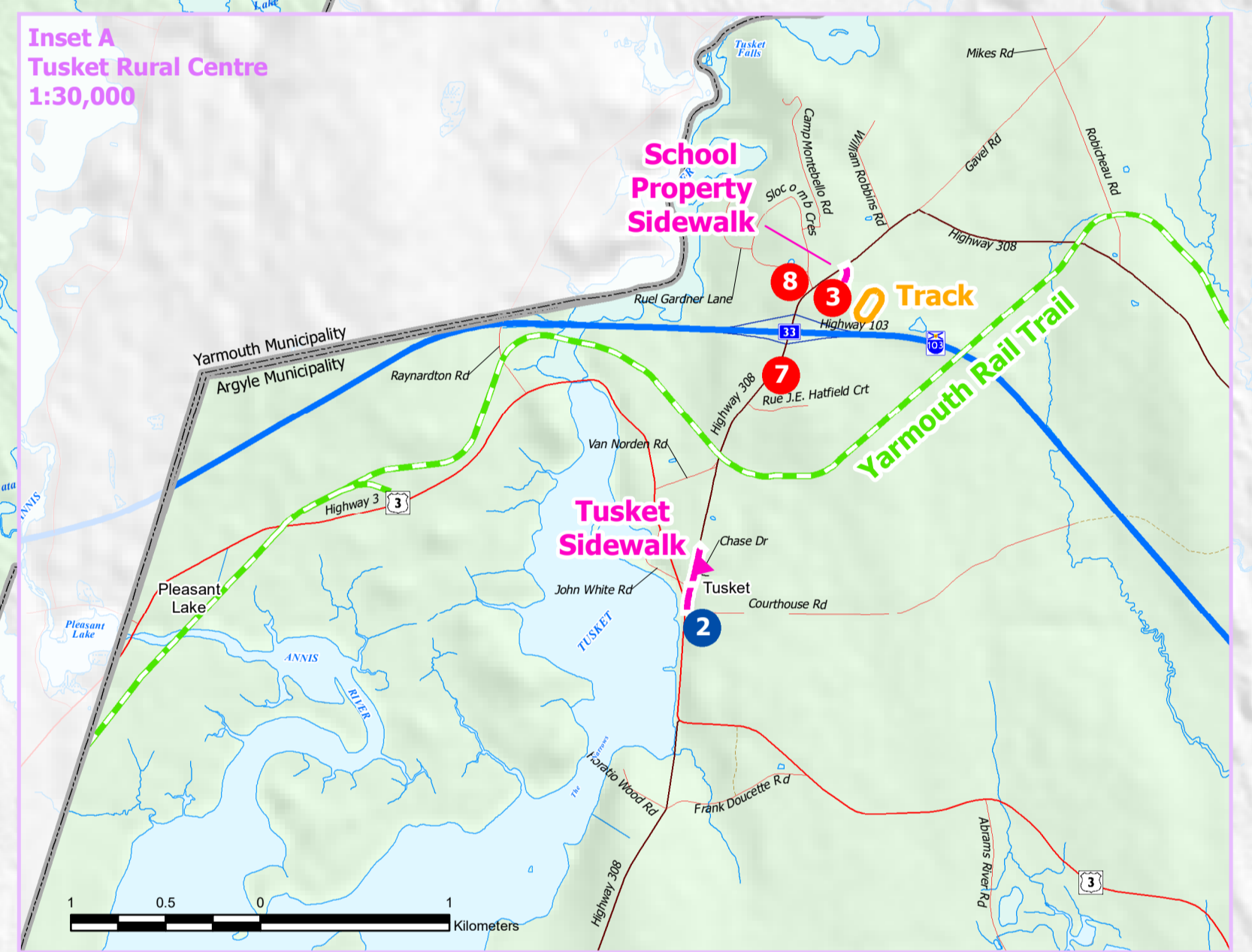
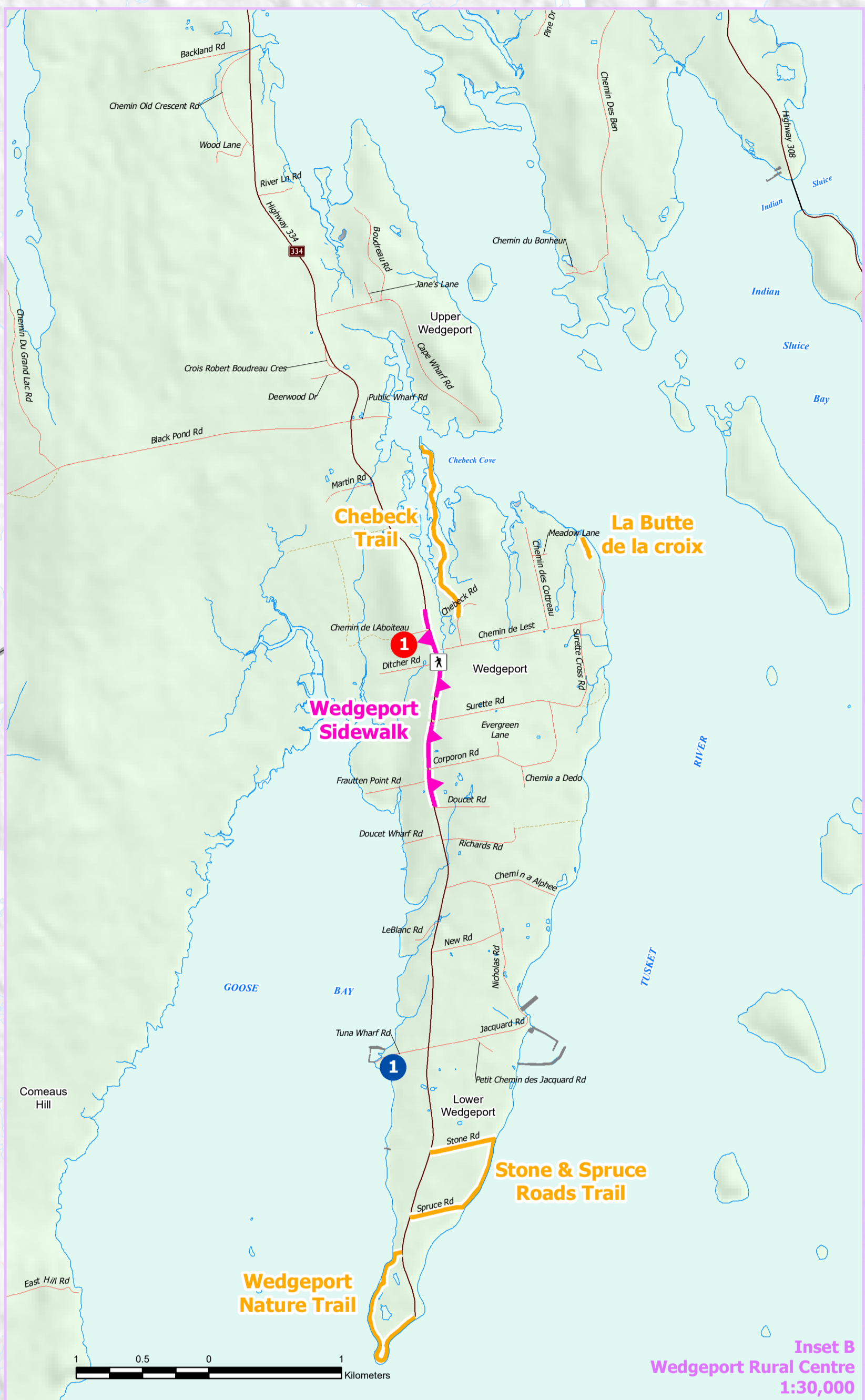




- COMMUNITY FACILITIES / DESTINATIONS**
- 1 École Wedgeport
 - 2 Plymouth School
 - 3 École Secondaire de Par-en-Bas
 - 4 École Belleville
 - 5 Drumlin Heights Consolidated School
 - 6 École Pubnico-Ouest
 - 7 Argyle Municipal Office
 - 8 Université Sainte-Anne
- RECREATION AND TOURISM DESTINATIONS**
- 1 Wedgeport Tuna Museum
 - 2 Argyle Township Court House & Gall
 - 3 Église Ste-Anne Church and First Chapel Site
 - 4 Glenwood Provincial Park
 - 5 Argyle Historical Baptist Church
 - 6 Musée des Académiciens des Pubnicos
 - 7 Le Village Historique Académicien de la Nouvelle-Écosse
 - 8 Great Pubnico Lake
 - 9 French Lake



Projection: Universal Transverse Mercator, Zone 20 North
Datum: North American Datum 1983 (NAD83)

Scale: 1:68,000

This product includes map data derived from the Nova Scotia Topographic Database (NSTDB) and the Nova Scotia Civil Address File (NSCAF) and is Crown © copyright 2022, Province of Nova Scotia.

Used by permission of Service Nova Scotia and Municipal Relations (SNMRL) license #A0396 and #A0812. This map is intended for reference purposes only. Errors and omissions may exist.

This map may not be reproduced in whole or in part, by any means-graphic, electronic or mechanical without the written permission of the Municipality of the District of Argyle - 3 Rue J.E. Hatfield Ct., Tuskent, NS P.O. Box 10, B0V 3H0.

Municipality of the District of Argyle

Active Transportation

	100 Series Highway		Municipal Boundary		Trail
	Route		Minor Contours (5 m interval)		Trails (Proposed)
	Exit Ramp		Major Contours (25 m interval)		Sidewalk and Paved Shoulder
	Trunk		Wind Turbine		Proposed Sidewalk
	Local Road		Yarmouth Rail Trail		Crosswalk
	Seasonal Road				

Sidewalk and Paved Shoulder Note: This line symbol indicates areas which exist on the ground or are in the process of being constructed.